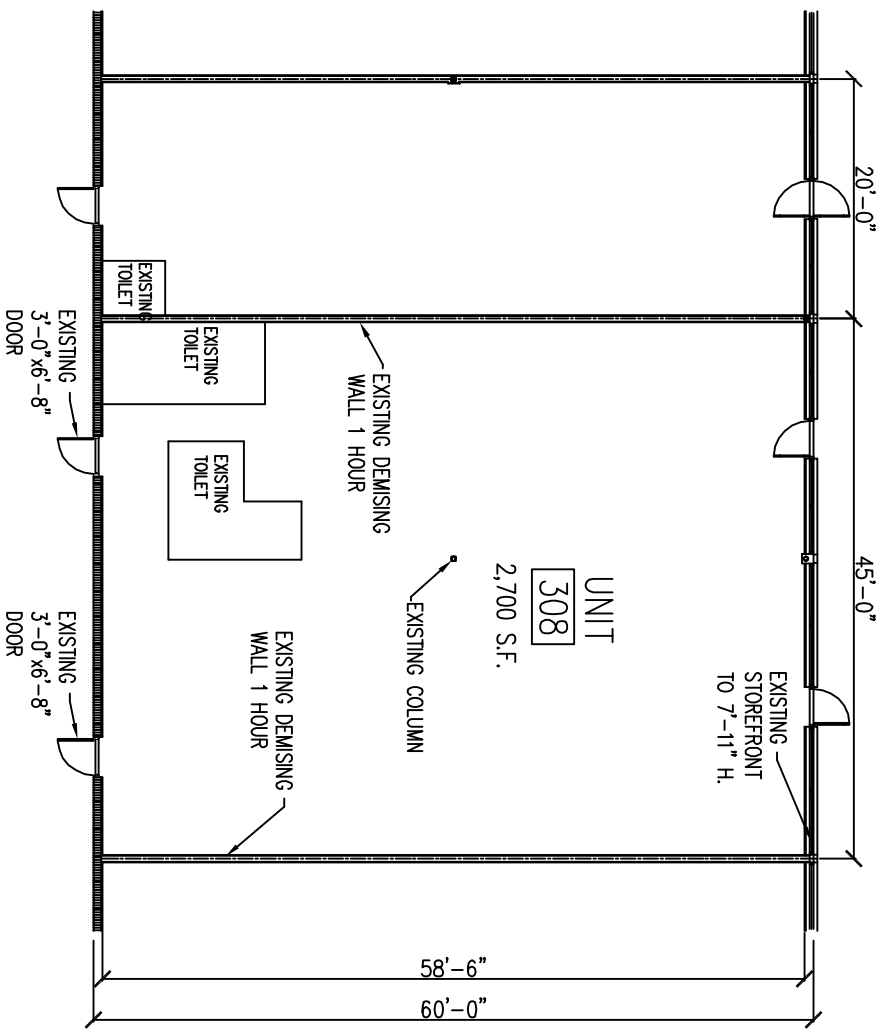


DRIVE

FRONT WALK



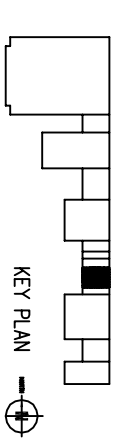
**LEGEND:**

==== FRAME WALL

===== CONCRETE BLOCK WALL

**EUGENE RUSSELL DAVIS**  
 architect Inc.  
 3615 N.W. 13th. Street Gainesville, FL 32609  
 PHONE 352- 372-6477 FAX 352-338-4476

**BUTLER PLAZA 1**  
 S W ARCHER ROAD GAINESVILLE, FLORIDA



DATE: 7-8-09  
 PROJECT # 0915  
 LOD 308